



RELAY PACKET

IN THIS PACKET:

- Letter from Team ZKZM
- Rules of the Road
- Logistics and Maps
- Emergency Information
- Vehicle Pass
- Relay Course Map

WELCOME!

Congratulations on joining the FIRST Marathon Relay at the Zeigler Kalamazoo Marathon!

We are very excited to offer this event. We knew it would be popular but without much marketing it has grown significantly! Your team is one of 24 teams and a total of over 115 relay-ers! THANK YOU for making this awesome!

We've tried our best to think of everything to make your experience awesome and consulted with runners who have completed relays before. Your experience and feedback, as the first relay cohort will be essential to the future success of this event.

We chose to have you carpool with your own vehicles and ask that you follow instructions contained in this packet. Kalamazoo is wild with construction so the directions to each point are truly the most efficient taking into consideration the construction and the marathon course.

Public Safety officers along the designated routes are aware of your moving about the course and will be looking for your vehicle bib and vehicle pass. Make sure they are clearly displayed on your dashboard!

We thank you for signing your team up and hope you have such a fun time!

Please make sure you review this packet and have it in your vehicle come race day.

Carrie Drake
Race Director

Alaina Schuld
Director of Operations

RULES OF THE ROAD

Please review the following “Rules of the Road” to ensure your successful completion of the Marathon Relay:

- **Place one bib AND the Vehicle Pass on the dashboard of your vehicle** so that official event personnel can see it clearly. You will not be able to pass certain points if you do not display these two items.
- **Follow the designated vehicle routes to get to each exchange zone.** With all of the construction, this is CRITICAL to you getting to each zone. These routes were made in partnership with public works and public safety.
- **Follow all traffic laws.** Vehicles on the roads still need to follow all applicable traffic laws as you move from zone to zone.
- **Take EXTRA CAUTION around runners and at zones where you have to cross the course to park.** Each zone will have volunteers helping to facilitate your drop off and pick up.
- **Be kind and listen to the Exchange Zone volunteers.** They are here to help you and make sure you don't injure anyone. They are volunteering so please please be kind and thank them!
- **Be kind to other teams.** This is a friendly relay. Kind competition is encouraged but please do not get so caught up in the competition that you fail to ensure the safety of runners and your team along the way.
- **Top three teams will receive trophies!** May you have a great event day and do your best while following all the above rules.
- **Finish Together (and don't block others finishing)!** We encourage you to finish together. Review the last exchange point pages for the designated lot. As you join your teammate to finish, please yield to other runners who are at the end of their marathon and will be focused on just getting to the finish.
- **Any violations of the above rules** will be noted by event personnel and teams who violate these rules will be disqualified.

LOGISTICS & MAPS

IN THIS SECTION:

The Relay Parking Lot

Route to Zone One & Zone One Layout

Route to Zone Two & Zone Two Layout

Route to Zone Three & Zone Three Layout

Route to Zone Four & Zone Four Layout

Route to Finish Line & Team Run In

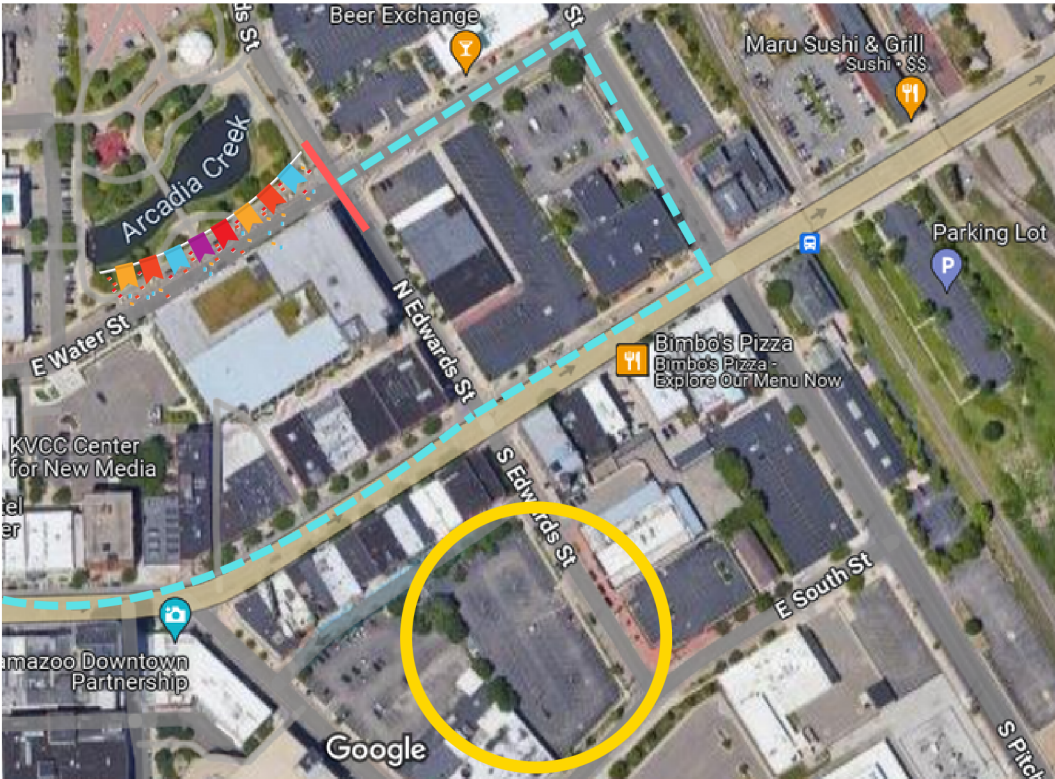
LOGISTICS & MAPS

THE RELAY PARKING LOT

**Haymarket District Parking Lot
139 S Edwards Street
Kalamazoo, 49007**

Located at the corner of S Edwards Street and E South Street across from the Wild Bull.

Park your vehicle here at the start and the finish for the best access to the start/finish line and the rest of the course.



LOGISTICS & MAPS

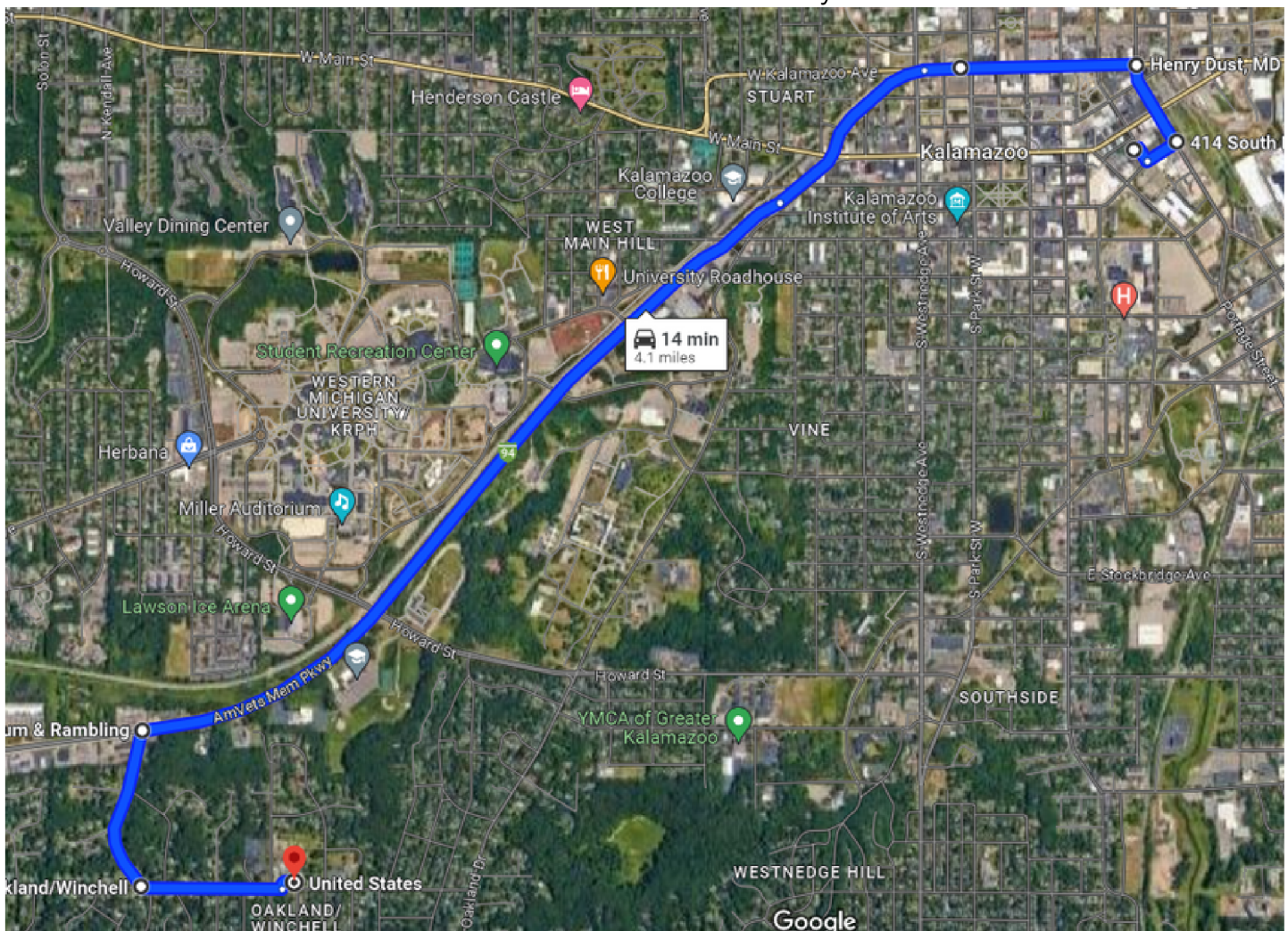
ROUTE TO ZONE ONE

From:
Haymarket District Parking Lot
139 S Edwards Street
Kalamazoo, 49007

To:
Winchell Elementary
2316 Winchell Ave
Kalamazoo, 49008

Follow this route to avoid construction and overlapping the course. This will be busy. Give yourself enough time to get there.

- Head South on Edwards Street
- Turn East on South Street
- Turn North on Pitcher (one lane will remain open to access Kalamazoo)
- Turn West on Kalamazoo
- Follow Kalamazoo to Stadium Drive
- Head Southwest on Stadium Drive past Howard Street
- Turn South onto Rambling Road
- Turn East on Winchell Ave
- Park in front of Winchell Elementary School

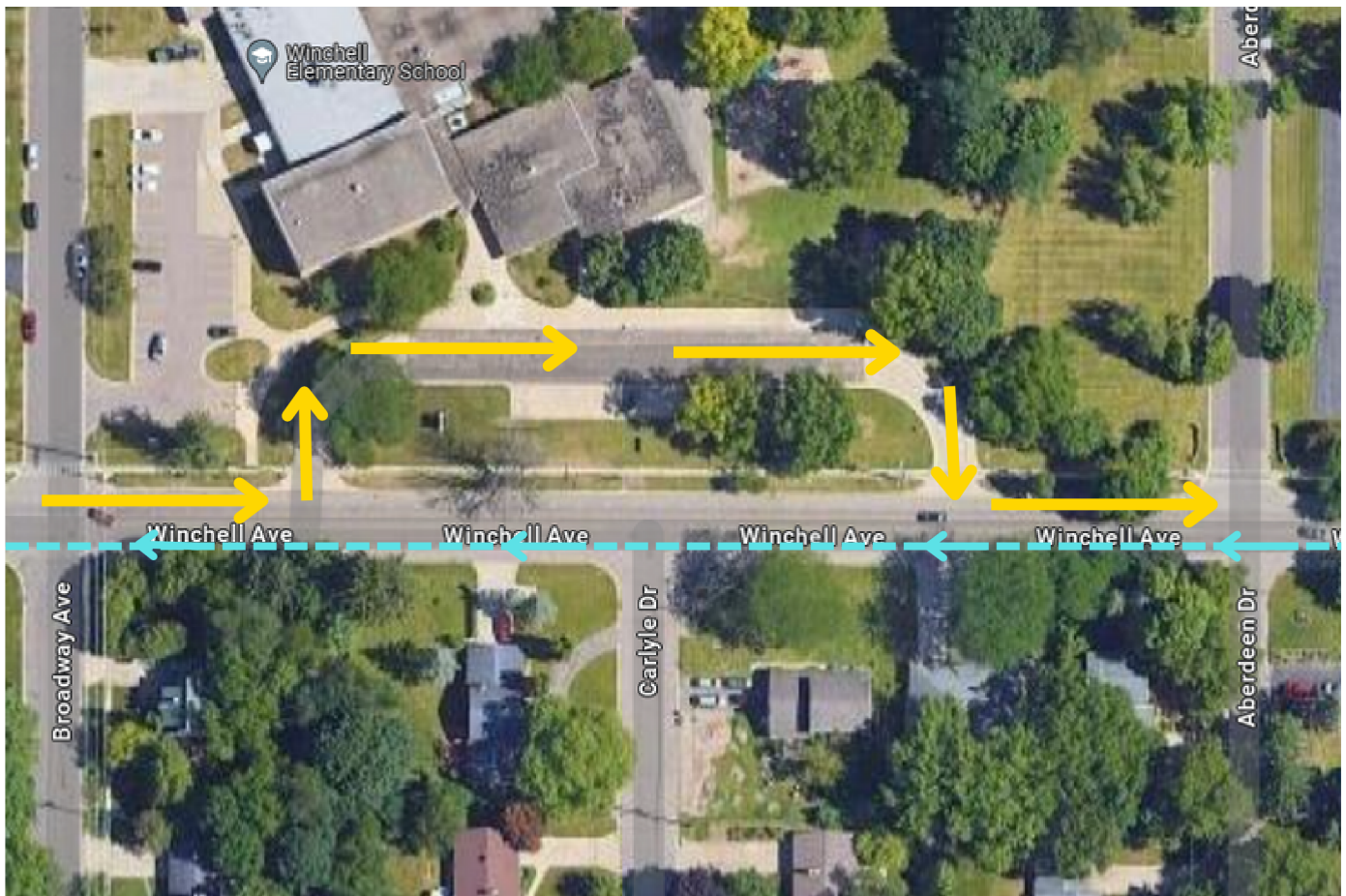


LOGISTICS & MAPS

ZONE ONE LAYOUT

This will be an EXTREMELY busy exchange zone. It is early in the mileage so likely you will be arriving with most other teams. Try to give yourself as much time to get here and get settled.

You will approach the elementary school from the west.
Enter the west drive and park in the turnaround area.
Exit west and head toward Oakland Drive to proceed to the next exchange zone.
Vehicles will be in the northern most lane heading west.
Runners will be in the southern most lane heading east.



LOGISTICS & MAPS

ROUTE TO ZONE TWO

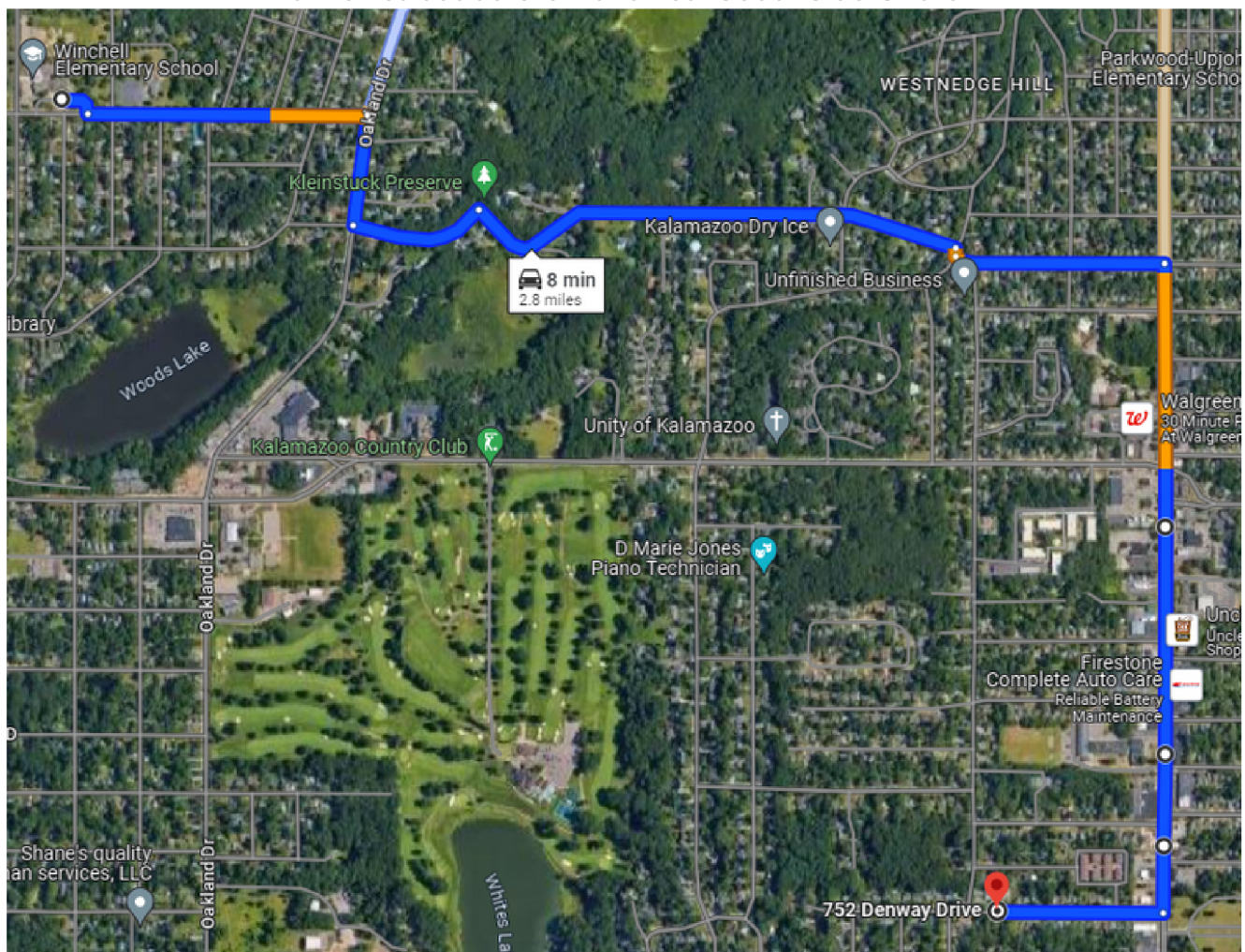
From:
Winchell Elementary
2316 Winchell Ave
Kalamazoo, 49008

To:
Approx: 752 Denway Drive
Kalamazoo, 49008

This second is tricky turning around on the street. Be mindful of other teams as you navigate this exchange zone.

PLEASE NOTE: Whites Road is FULLY CLOSED at Duke. You cannot pass. That is why we have you on Chevy Chase, Edgemoor and Montrose.

Head west on Winchell
Turn South on Oakland
Turn West on Chevy Chase
Chevy Chase turns into Edgemoor Ave
Follow Edgemoor Ave to Bronson
Cross over Bronson slightly south to turn onto Montrose Ave
Follow Montrose to Westnedge
Head south on Westnedge to Denway (soon after Speedway)
Turn west on Denway
Park on street before Duke near South Side Church



LOGISTICS & MAPS

ZONE TWO LAYOUT

This will still be a pretty busy exchange zone. Try to give yourself as much time to get here and get settled.

You will approach the course from the east on Denway as it runs along Duke Street.

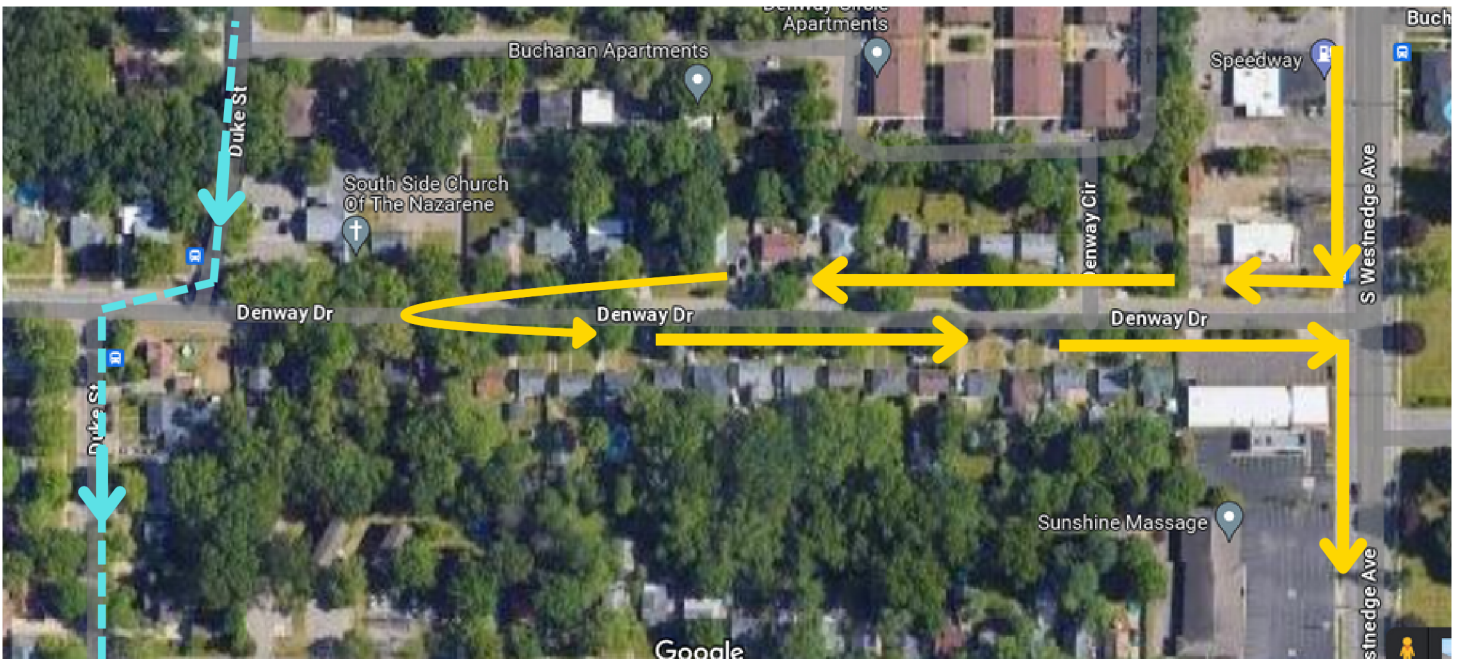
You will park *on the street* next to the church on Denway.

NOTE: The church parking lot is not available for this exchange zone. **ONLY** park on the street.

You will have to make a U-turn to head east back to Westnedge.

This U-turn will be the challenging part because there will be traffic and other relay cars.

Be careful and courteous as you navigate this zone.



LOGISTICS & MAPS

ROUTE TO ZONE THREE

From:
Approx: 752 Denway Drive
Kalamazoo, 49008

To:
Parking Lot
1901 Romence Rd Parkway
Portage, 49024

The third exchange zone will have a lot of room for you and the teams.
You will have to cross the course to access the parking lot.
Runners have the right of way. BE CAUTIOUS.

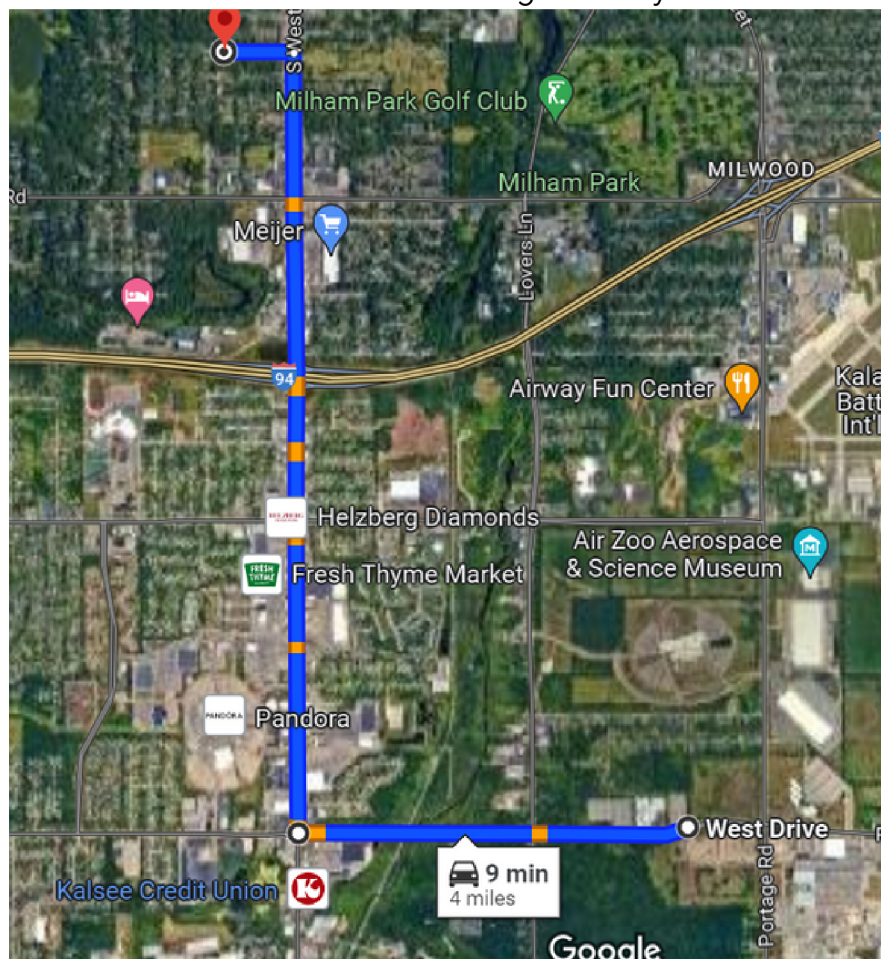
PLEASE NOTE: Take Westnedge south all the way to Romence. If you do not, you will risk having to cross the course and being delayed by public safety.

Make a U-turn on Denway to head east back to Westnedge.
Turn south on Westnedge
Head south until Romence
Head east on Romence.

You will be on the south side of the road. The exchange point is at 1901 Romence and is on the north side of the road.

Volunteers will ensure you cross the course to park safely.

Runners have the right of way



LOGISTICS & MAPS

ZONE THREE LAYOUT

This will still be a pretty busy exchange zone. Try to give yourself as much time to get here and get settled.

You will approach the course from the east on Denway as it runs along Duke Street.

You will park *on the street* next to the church on Denway.

NOTE: The church parking lot is not available for this exchange zone. **ONLY** park on the street.

You will have to make a U-turn to head east back to Westnedge.

This U-turn will be the challenging part because there will be traffic and other relay cars.

Be careful and courteous as you navigate this zone.

Runners will be located on the large trail/sidewalk not on the road.

This makes your turn onto Portage Rd heading north easy!

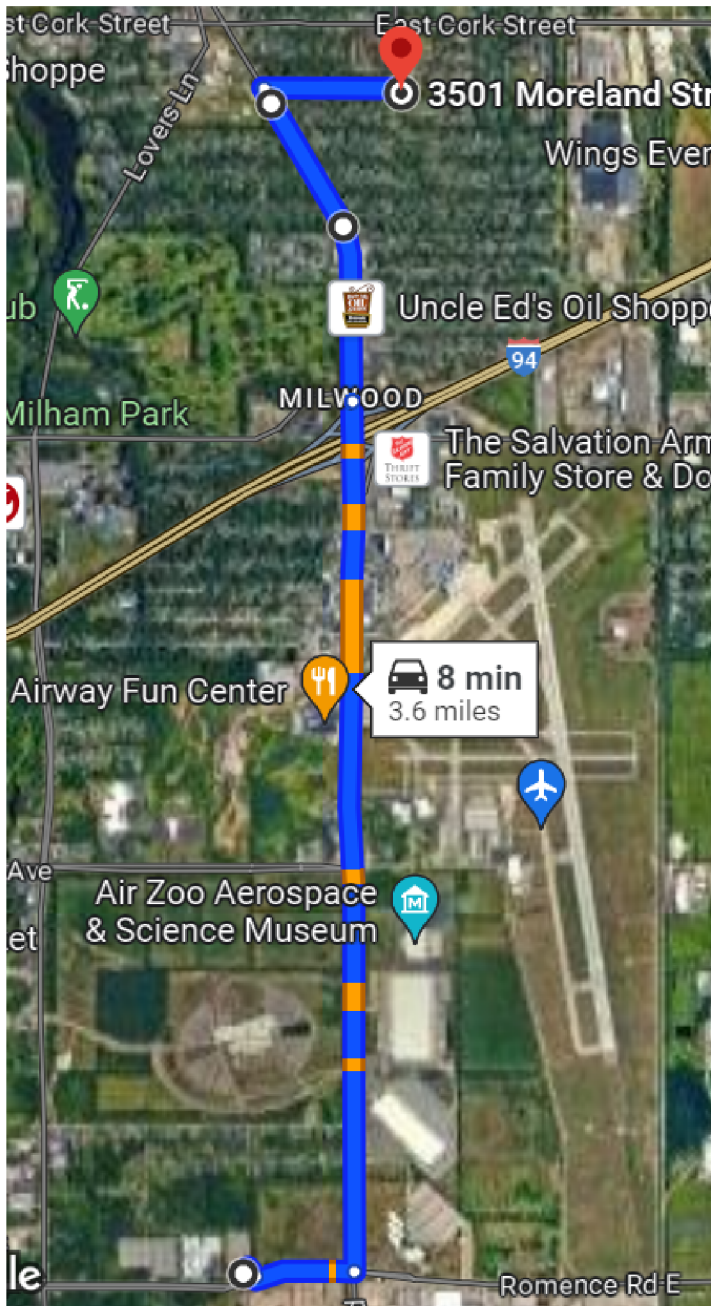


LOGISTICS & MAPS

ROUTE TO ZONE FOUR

From:
Parking Lot
1901 Romence Rd Parkway
Portage, 49024

To:
Greenwood Elementary
3501 Moreland Street
Kalamazoo, 49001



The fourth exchange zone is the only exchange zone not paired with an aid station. Make sure you have water and snacks for your runner completing their leg.

There is a port-a-john here for those who need to use the bathroom.

You will have to cross the course to access the parking lot.
Runners have the right of way. **BE CAUTIOUS.**

PLEASE NOTE: Take Westnedge north all the way to Kingston. If you do not, you will risk having to cross the course and being delayed by public safety.

Turn east onto Romence Road
Turn north on Portage Road
Head north on Portage until Kingston
Kingston ends at Greenwood Elementary

Runners will be running north along Moreland

Volunteers will ensure you cross the course to park safely.

Runners have the right of way

LOGISTICS & MAPS

ZONE FOUR LAYOUT

This is the only exchange zone without an aid station. Make sure you have hydration and snacks for your runner who is finishing their leg.

There is a port-a-john for anyone who needs to go to the bathroom.

You will approach the course from the west on Kingston
You will cross Moreland (which is the course) into the Greenwood Elementary parking lot
You will head back out to Portage Road on Kingston to head to the parking lot

Volunteers will help you cross the course safely.

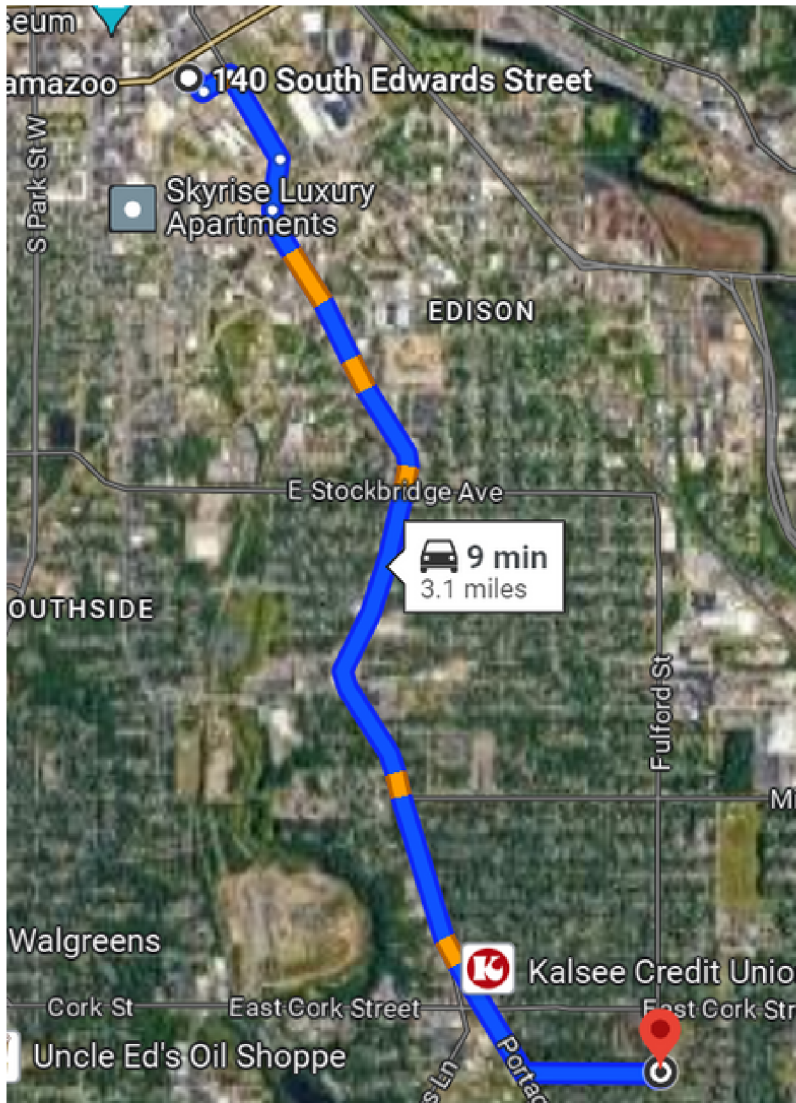


LOGISTICS & MAPS

ROUTE TO PARKING & FINISH

From:
Greenwood Elementary
3501 Moreland Street
Kalamazoo, 49001

To:
Haymarket District Parking Lot
139 S Edwards Street
Kalamazoo, 49007



You made it back to home base!

We encourage teams to run in to the finish together.
You will park your vehicle and head to the L-shaped lot along the course to meet your team and run in.

PLEASE BE MINDFUL OF RUNNERS.
Many of the runners around your teammate are on mile 26 of their 26.2 run.
They are ready to finish.
Give them space and make sure they can pass you without being obstructed.

Head west on Kingston
Turn north on Portage
Portage changes into Southtown and then Pitcher
Turn west on South Street
Turn north on S Edwards
Park in the parking lot

LOGISTICS & MAPS

FINAL PARKING & FINISH

Park your car and head to the lot along the course where you can pick up your teammate and run into the finish as a team!

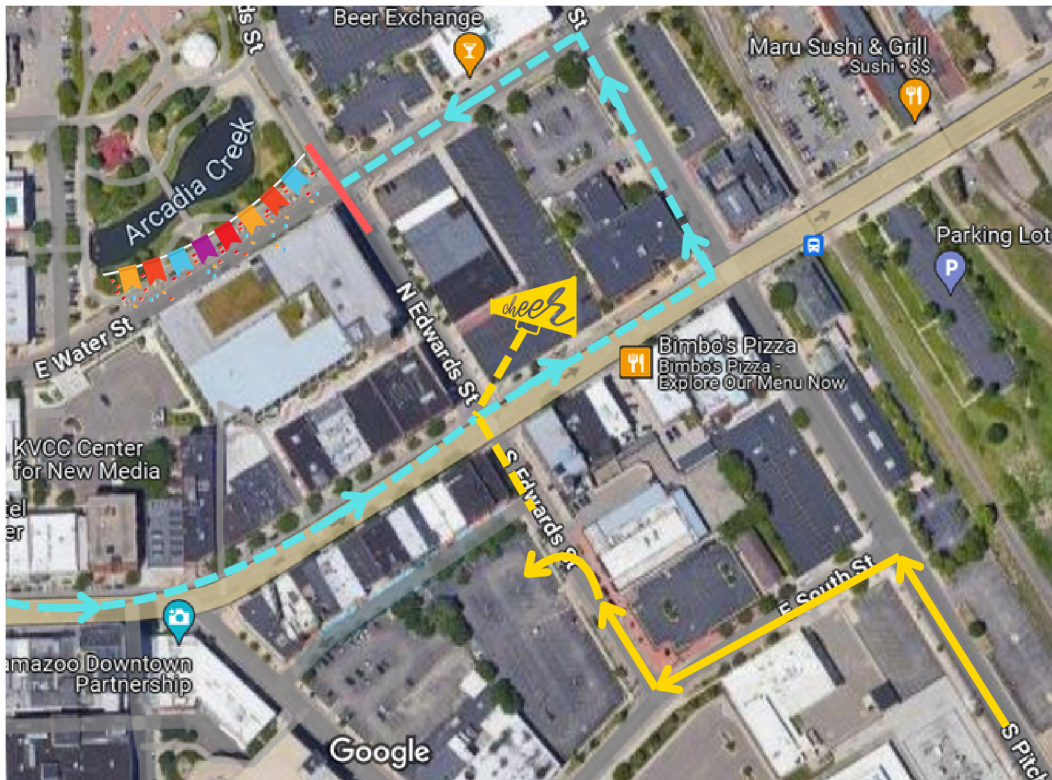
PLEASE BE MINDFUL OF RUNNERS.

Many of the runners around your teammate are on mile 26 of their 26.2 run.

They are ready to finish.

Give them space and make sure they can pass you without being obstructed.

Park your car and walk to the L-shaped lot on the map!



EMERGENCY INFORMATION

If there is an emergency, please review the information below.

In the event of an **acute life threatening emergency**, a cardiac event or similar,
call 911.

In the event a runner is **injured with something non-life threatening**,
call **incident command at 269-552-5217**

If you experience **logistical issues**, call or text the Race and/or Operations Directors:
Carrie Drake, Race Director: 269-823-3484
Alaina Schuld, Director of Ops: 269-303-8480

There is medical personnel along the course at designated aid stations. Review the course map attached to see where they are located.

Medical personnel will also be in vehicles and on bicycles riding along the course.

VEHICLE PASS

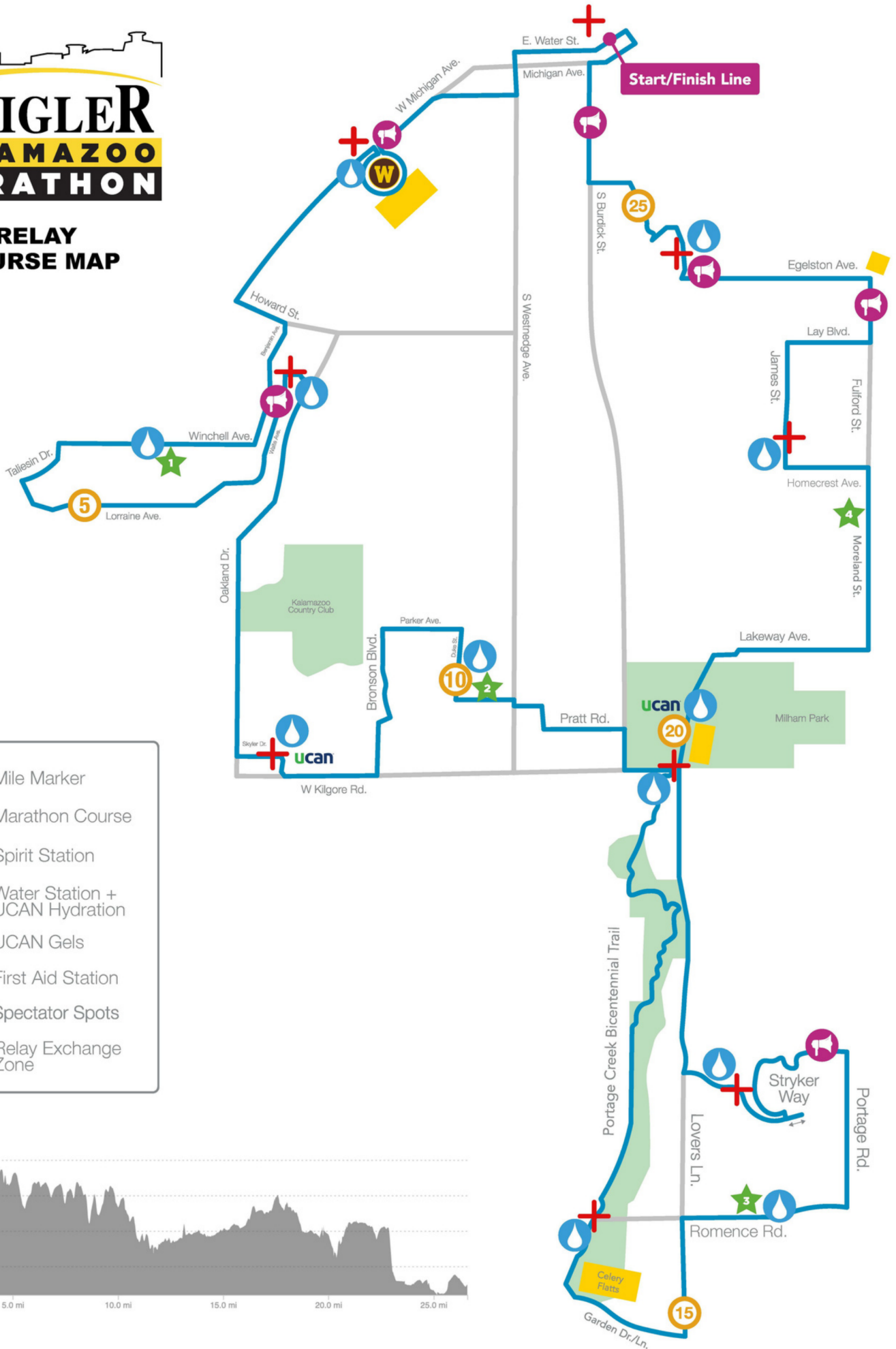


DRIVING A HEALTHY COMMUNITY

MARATHON RELAY PARTICIPANT VEHICLE

ZEIGLER KALAMAZOO MARATHON

RELAY COURSE MAP



- Mile Marker
- Marathon Course
- Spirit Station
- Water Station + UCAN Hydration
- UCAN Gels
- First Aid Station
- Spectator Spots
- Relay Exchange Zone

